



HIMALAYAN SALT LAMP

USER INSTRUCTION MANUAL



www.kissbynature.com

Safety Instructions for Himalayan Salt Lamp

Placement: Ensure the Himalayan salt lamp is placed on a stable and level surface to prevent it from tipping over. Keep it away from edges and areas where it could be easily knocked down.

Power Source: Use only the provided power cord and adapter to connect the salt lamp to a power source. Do not use if the cord or adapter is damaged in any way.

Voltage Compatibility: Verify that the voltage requirements of the salt lamp match your local voltage supply to prevent damage or electrical hazards.

Keep Dry: Keep the salt lamp dry at all times. Avoid exposing it to water or moisture, as salt is hygroscopic and may absorb moisture, leading to potential damage or electrical hazards.

Cleaning: Clean the salt lamp regularly with a dry or slightly damp cloth to remove dust and debris. Ensure the lamp is completely dry before plugging it back in.

Heat Regulation: The salt lamp may emit heat during operation. Avoid touching the lamp while it is turned on or immediately after turning it off to prevent burns or discomfort.

Ventilation: Ensure adequate ventilation around the salt lamp to prevent overheating. Do not place the lamp near flammable materials or in confined spaces.

Children and Pets: Keep the salt lamp out of reach of children and pets to prevent accidental ingestion of salt or tampering with the electrical components.

Unattended Operation: Do not leave the salt lamp unattended while it is turned on. Turn it off when not in use or when leaving the home to reduce the risk of fire or electrical hazards.

Storage: If storing the salt lamp for an extended period, disconnect it from the power source and store it in a cool, dry place away from direct sunlight.

Disposal: Dispose of the salt lamp according to local regulations. Do not dispose of it in regular household waste or incinerate it.

Professional Assistance: If the salt lamp malfunctions, emits a burning smell, or shows signs of damage, discontinue use immediately and seek professional assistance for inspection and repair.

SAFETY INSTRUCTIONS



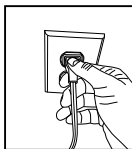
HANDLE
WITH CARE



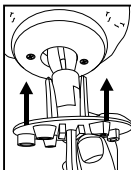
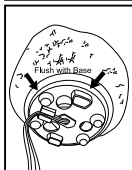
KEEP OUT OF REACH
OF CHILDREN



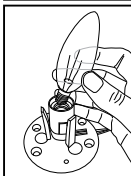
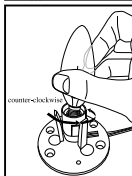
Changing your bulb:



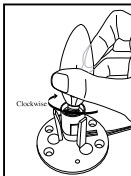
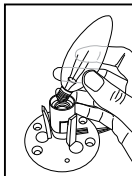
Step 1: Unplug your lamp from the outlet.
Note: Lamp surface and bulb may be hot,
please allow time to cool.



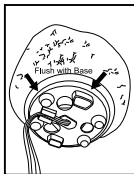
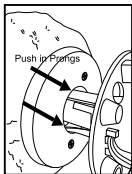
Step 2: Lay salt body onto side
and carefully pull to remove
plastic lamp base from
bottom.



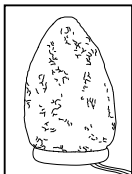
Step 3: With plastic base facing
upright, twist the unusable
bulb counter-clockwise,
remove and dispose. **DO NOT**
prod or poke metal thread
with finger or instrument.



Step 4: Twist replacement bulb
clockwise and secure into
base.



Step 5: With lamp lying on side, carefully insert the plastic base back into the lamp body. Make sure all three plastic prongs slide fully into hole and sit flush against with wooden salt body.



Step 6: place lamp upright and plug in.

Product Information: Himalayan Salt Lamp (UK)

Brand: Kiss by Nature

Product Name: Himalayan Salt Lamp

Country of Origin: Pakistan (Himalayan region)

Material: Authentic Himalayan salt crystals, typically sourced from salt mines in the Khewra Salt Mine in Pakistan.

Color: Himalayan salt lamps typically emit a warm, pinkish-orange glow, though variations in color and intensity may occur due to the natural properties of the salt crystals.

Power Source: Requires electrical power to operate. Comes with a power cord and adapter suitable for UK electrical outlets.

Voltage: Compatible with standard UK voltage (usually 230V).

Wattage: 15 watts

Bulb Type: Uses a small, low-wattage incandescent or LED bulb placed inside the salt lamp to emit light.

Switch Type: Features an dimmer switch.

Base Material: The base of the lamp is usually made from sturdy materials such as wood, metal, or plastic, providing stability and support

for the salt crystals.

Packaging: The Himalayan salt lamp is packaged securely to prevent damage during transportation. Packaging materials may include cardboard, bubble wrap, or foam inserts.

Technical Specification

Voltage : 230V
Wattage : 15 Watts
Power Supply : 230V 50Hz
Type of Bulb : E14

Return and Warehouse

Return the item to the retailer with its packaging and proof of purchase if it is broken or does not function when you first take it out of the carton. For any inquiries, please send an email to support@kissbynature.com.

